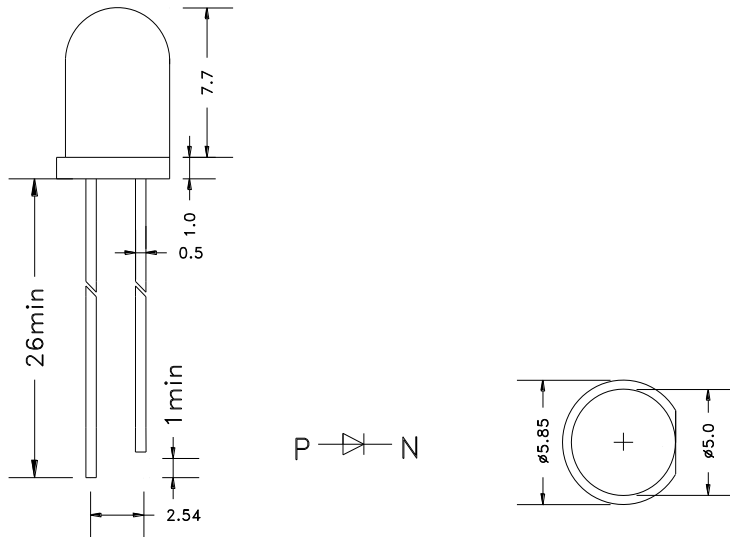


1. 5MM LED



Initial Electrical / Characteristics

Parameter	Symbol	Condition	Min	Avg	Max	UNIT
Forward Voltage	Vf	If=20mA	3.0	--	3.2	V
Reverse Current	IR	VR=5V	--	--	5	μA
Viewing Angle	∅2	--	--	15	--	Deg
Luminous Intensity	IV		10000	--	12000	mcd

Forward Current vs. Ambient Temperature Relative Intensity vs. Ambient Temperature

