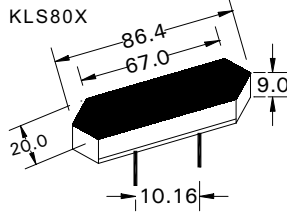
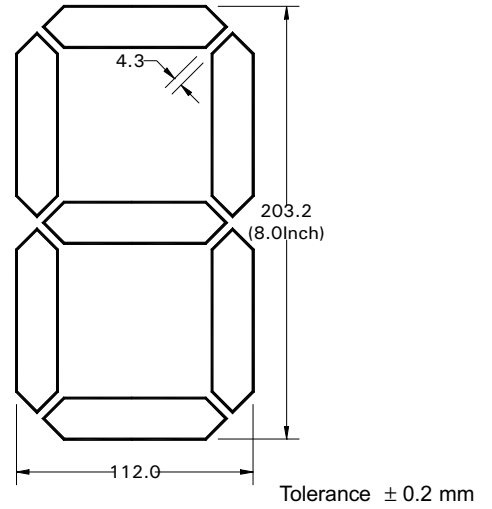


Face Length	MM	86.0
Face Width	MM	20.0
Height	MM	9.1
Pin Spacing	MM	10.16
No. of pins	Pins	2

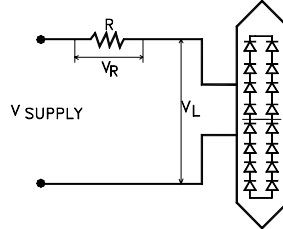


Suggested Assembly Layout by and customer



Operating Characteristics :

Design Voltage : 7.2V
 Max. Current : 80 mA
 No. of Chips : 4 Parallel Chains of 4 LEDs in Series

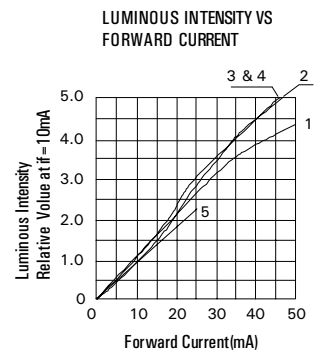
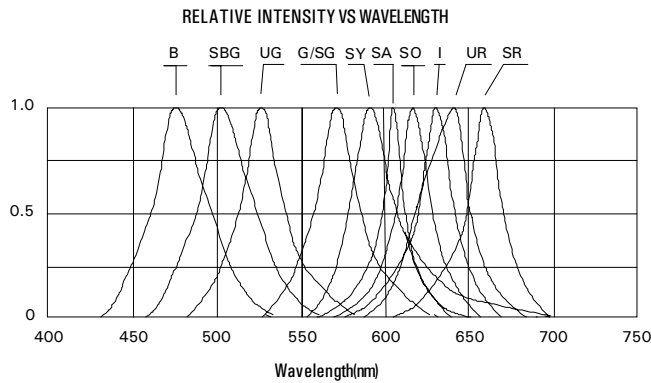
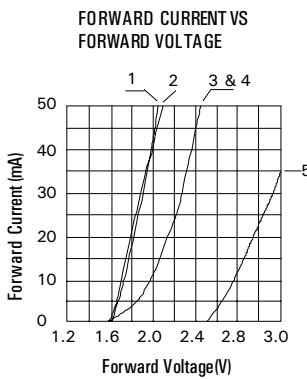


CAUTION : USE A RESISTOR				
Supply Voltage	V Led	V R@60mA	R@60mA	R@80mA
9V DC	7.2V(Typ)	1.8V DC	33 Ohms 0.25 Watt	22 Ohms 0.25 Watt
12V DC	7.2V(Typ)	4.8V DC	82 Ohms 0.5 Watt	60 Ohms 1.0 Watt

Note : All Dimensions are in mm

PART NO.			KLSS80 I	KLSS80 SR	KLSS80 G	KLSS80 SG	KLSS80 SY	KLSS80 SA	KLSS80 UR	KLSS80 SO	KLSS80 B/UB	KLSS80 BG	KLSS80 UG	KLSS80 W		
OPERATING CHARACTERISTICS AT 25°C (Bigger Display may have more than one LED chip per segment)			UNITS	SYMBOL	IRE D I	SUPER RED SR	GREEN G	SUPER GREEN SG	SUPER YELLOW SY	SUPER AMBER SA	ULTRA RED UR	SUPER ORANGE SO	BLUE B/UB	BLUE GREEN BG	ULTRA GREEN UG	WHITE W
Semiconductor Composition					AlGaAs	GaP/AlInGaP	AlInGaP				SiC / GaInN					
Forward Voltage - Typical @ 10mA			V	V _F	2.10	1.90	2.20	2.20	2.10	2.10	1.90	1.90	3.50	3.50	3.50	3.50
Forward Voltage - Maximum @ 20 mA			V	V _{FM}	2.40	2.10	2.60	2.40	2.40	2.40	2.10	2.40	4.50	4.50	4.50	4.50
Reverse Current @ V _R = 5V			μA	I _R	100	100	100	100	100	100	100	100	100	100	100	100
Peak Emission Wavelength			nm	λ _P	630	660	568	568	590	610	645	620	470	502	525	---
Emission Wavelength Half Width			nm	Δλ	35	20	30	15	15	15	20	20	25	30	35	---
Luminous Intensity per Segment			μcd	I _V	3500	6000	4000	6000	7000	7500	13000	13000	6000	7000	17000	---
ABSOLUTE MAXIMUM RATINGS AT 25°C																
Reverse Voltage			V	V _R	5	5	5	5	5	5	5	5	5	5	5	5
Forward Current (avg)			mA	I _F	20	20	20	20	20	20	20	20	20	20	20	20
Peak Forward Current (T<1μs)			mA	I _{FS}	80	80	80	80	80	80	80	80	80	80	80	80
Operating / Storage Temperature Range			-10° C to +85° C													
Lead Soldering Temperature			< 260° C for 5 Seconds													
Series Resistor to be used per segment : 300 Ohms @ 5V Supply (OR) 50 to 100 Ohms @ 3V Supply																

ELECTRICAL CHARACTERISTIC CURVES



1. AlGaAs : I, SR 2. GaP : G 3 & 4. AlInGaP : SG, SY, SA, UR, SO 5. GaInN : B, BG, UG, W

kwality **KWALITY PHOTONICS PRIVATE LIMITED**
 ISO 9001-2000 29, EC Kushaiguda, Hyderabad-500 062, INDIA. Ph : 91-040-27123555, 27136252 Fax : 91-040-27124762
 Email : kwality@kwalityindia.com www.kwalityindia.com