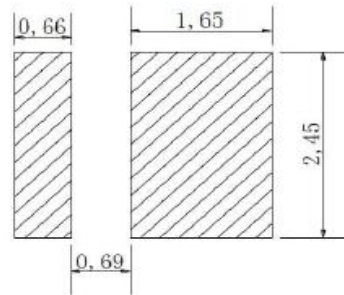
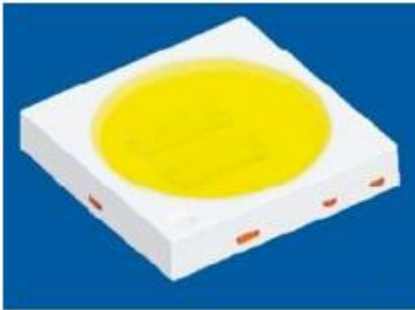
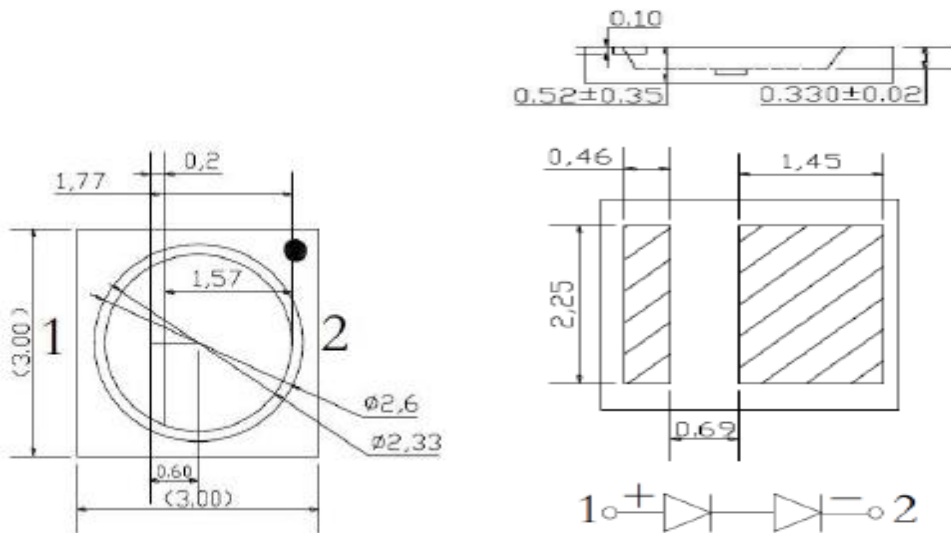


Recommended Soldering Pattern



Package Dimensions



Production List

CCT K Min.	CCT K Typ.	CCT K Max.	ϕ (IM) Min.	ϕ (IM) Max.	Test Conditions
2850	3000	3150	100	130	IF=150mA
3800	4000	4200	110	140	IF=150mA
6150	6500	6850	110	140	IF=150mA

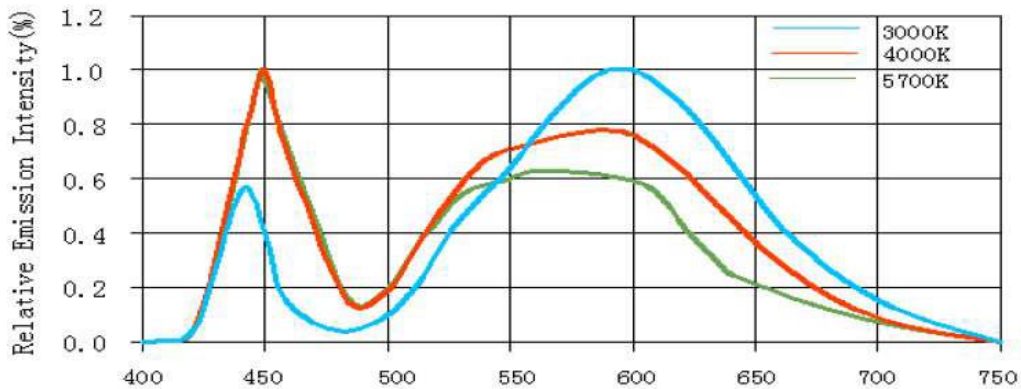
Electrical / Optical Characteristics at Ta=25°C

Parameter	Symbols	Min.	Typ.	Max.	Units	Test Conditions
Forward Voltage	VF	5.6	--	6.8	V	IF=150mA
Viewing Angle	2 θ 1/2	--	120	--	Deg	IF=150mA
Color Rendering Index	Ra	80	--	--	--	IF=150mA
Color tolerance	SDCM	--	--	6	--	IF=150mA
Electrostatic Discharge (HBM)	ESD	2000	--	--	V	IF=150mA

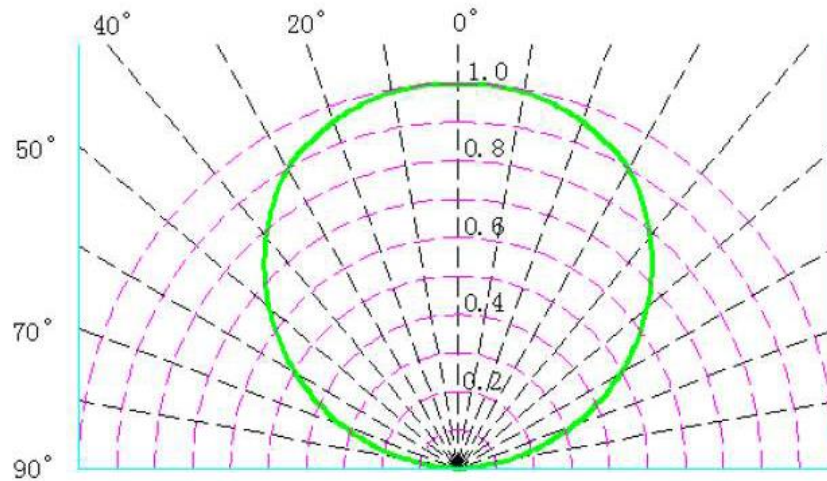
Absolute Maximum Ratings at Ta=25°C

Parameter	Symbol	Rating	Units
Power Dissipation	Pd	1156	mW
Forward Current	IF	170	mA
Peak Forward Current [1]	IFP	250	mA
Operating Temperature	Topr	-35 ~ +100	°C
Storage Temperature	Tstg	-35 ~ +85	°C
Thermal Resistance (Junction / Soldering point)	Rthj-s	10	°C/W
Junction Temperature	Tj	125	°C

Spectrum Distribution



Curves of beam angle and relative brightness



KWALITY PHOTONICS PRIVATE LIMITED ISO 9001-2008
 29, EC, Kushaiguda, Hyderabad-500 062. PH: 91-040-27123555, 27136252

kwalitypolywa@gmail.com, sales@kwalitiyindia.com, www.kwalitiyphotronics.com

