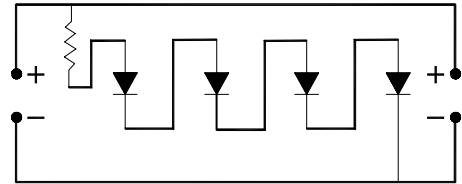


2 Series, 2 Parallel 4 Leds



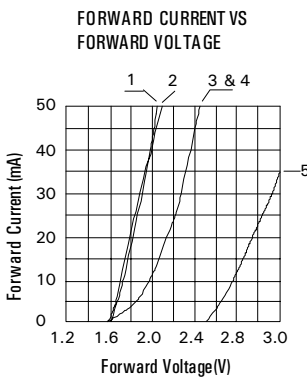
4 Series Leds

Note : All Dimensions are in mm

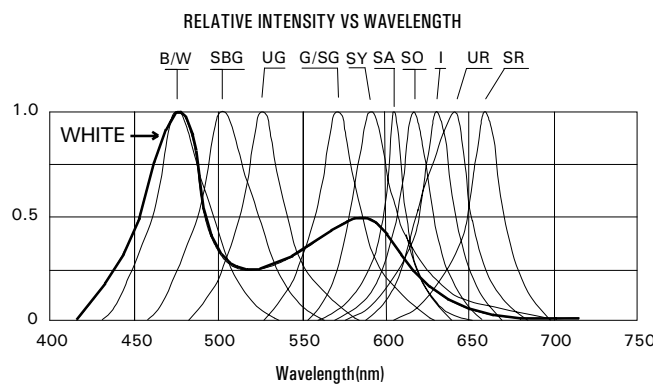
Tolerance ± 0.2 mm

PART NO.										
OPERATING CHARACTERISTICS AT 25°C (Bigger Display may have more than one LED chip per segment)	UNITS	SYMBOL	WHITE	RED	YELLOW	AMBER	GREEN	ULTRA GREEN	ULTRA BLUE	Circuit with Current Regulator
Semiconductor Composition										
Forward Voltage - Typical @ 40mA	V	$V_F$	8.0V	4.0V	4.0V	4.0V	4.0V	4.0V	4.0V	
Forward Voltage - Current	V	$V_{FM}$	50mA	4.5V	4.5V	4.5V	4.5V	4.5V	4.5V	
Reverse Current @ $V_R = 5V$	mA	$I_R$								
Color Coordinates	x,y									
Color Temperature	°C	$D_1$								
Color Rendering index	CR1	$CR_1$								
Luminous Flux	lm	$\phi_V$	50	35	35	35	35	35	50	
ABSOLUTE MAXIMUM RATINGS AT 25°C										Both Components need adequate Heat Sinking
Reverse Voltage	V	$V_R$	5							100mA per LED & derated at 1mA per degree C
Forward Current (avg)	mA	$I_F$	as in the							
Operating / Storage Temperature Range										-20° C to + 85° C
Lead Soldering Temperature										< 260° C for 5 Seconds
Series Resistor to be used per LED : 6 Ohms (2W~3W) @ 5V Supply										

ELECTRICAL CHARACTERISTIC CURVES

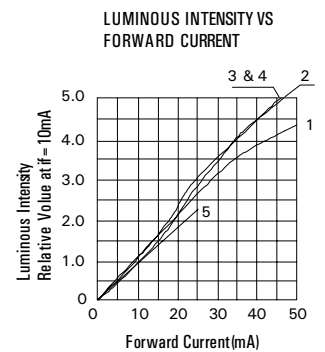


1. AlGaAs : I, SR



2. GaP : G

3 & 4. AlInGaP : SG, SY, SA, UR, SO



5. GaInN : B, SBG, UG, W

KPC/KLSGL-X8V

Rev. 00

1-6-04



KWALITY PHOTONICS PRIVATE LIMITED

29, EC Kushaiguda, Hyderabad-500 062, INDIA. Ph : 91-040-27123555, 27136252 Fax : 91-040-27124762  
 Email : kwality@kwalityindia.com www.kwalityindia.com