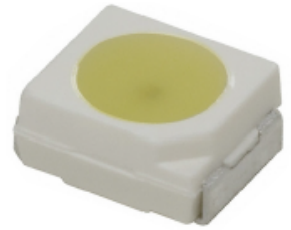
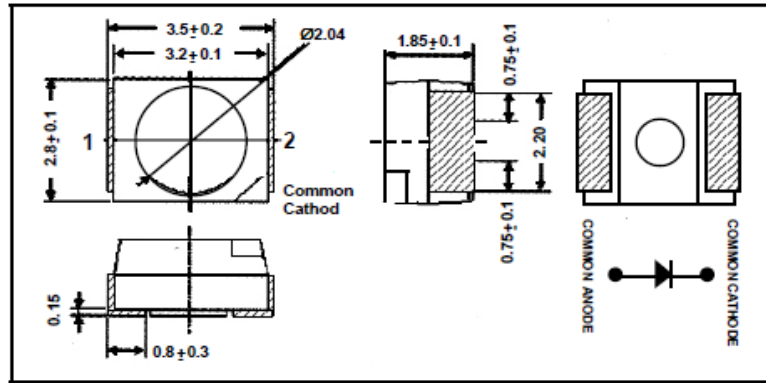


Face Length	MM	3.2
Face Width	MM	2.8
Height	MM	1.8
Pin Spacing	MM	1.5
Row SPacing	MM	3.2
No. of pins	Pins	4
Viewing Angle	2Φ/2 Deg.	120

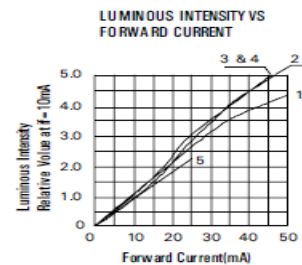
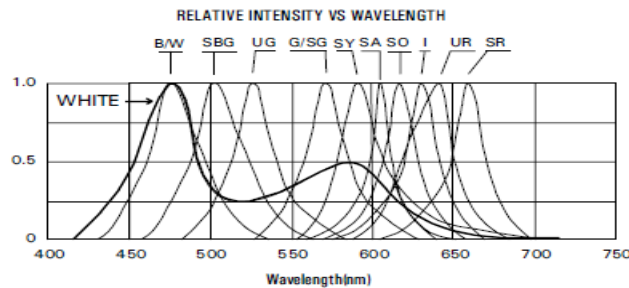
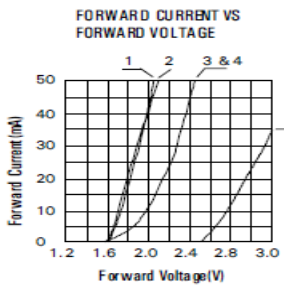


Note : All Dimensions are in mm

Tolerance ± 0.2 mm

PART NO.	Units	Symbol	KLSSL3228 W-White	KLSSL3228NW Neutral White	KLSSL3228WW Warm White	KLSSL3228SY S Yellow	KLSSL3228SA S Amber	KLSSL3228 UR Ultra Red	KLSSL3228B Blue	KLSSL3228UG Ultra Green
Semiconductor Composition			InGaN	InGaN	InGaN	Al InGaP	Al InGaP	Al InGaP	InGaN	InGaN
Forward Voltage-Typical @20mA	V	V <sub>F</sub>	3.30	3.30	3.30	2.10	2.10	1.90	3.30	3.30
Peak Emission Wavelength	μA	I <sub>R</sub>	100	100	100	100	100	100	100	100
Color Correlation Temp CCT-Typ	K	cct	6000	4500	3000	592	603	645	470	525
Luminous Intensity per Segment @20mA	mcd	I <sub>v</sub>		---	---	300	350	800	400	800
Luminous Flux @20mA	lm	∅ <sub>v</sub>	8lm	8lm	8lm	-	-	-	-	-
ABSOLUTE MAXIMUM RATING AT 25°C										
Reverse Voltage	V	V <sub>R</sub>	5	5	5	5	5	5	5	5
Forward Current (avg)*	mA	I <sub>F</sub>	30	30	30	30	30	30	30	30
Peak Forward Current T<1μs	mA	I <sub>FS</sub>	70	70	70	70	70	70	70	70
Operating /Storage Temperature Range	40°C TO +85°C									
Lead Soldering Temperature	< 260°C for 5 Seconds									

ELECTRICAL CHARACTERISTIC CURVES



1. AlGaAs : I, SR    2. GaP : G    3 & 4. AlInGaP : SG, SY, SA, UR, SO    5. InGaN : B, BG, UG, W

KPC/KLSSL3228 Rev 02 11.01.2013

**kwality** **KWALITY PHOTONICS PRIVATE LIMITED**  
 ISO 9001-2000 29, EC Kushaiguda, Hyderabad-500 062, INDIA. Ph : 91-040-27123555, 27136252 Fax : 91-040-27124762  
 Email : kwality@kwalityindia.com www.kwalityindia.com