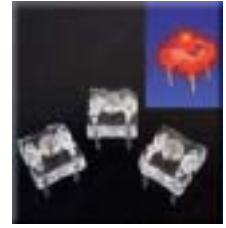
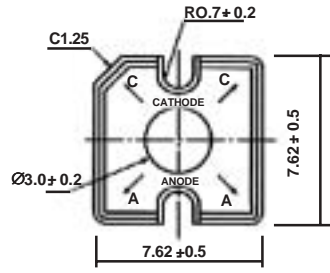
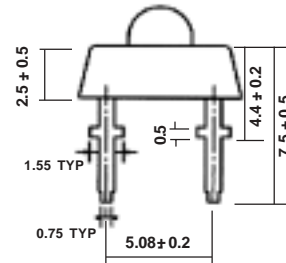
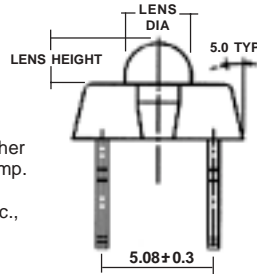


Face Length	MM	7.62
Face Width	MM	7.62
Height	MM	4.30
Pin Spacing	MM	5.08
Row SPacing	MM	5.08
No. of pins	Pins	4



- \* Suitable for High Current Operation
- \* High Power Output
- \* Low Thermal Resistance
- \* Specially designed for applications requiring higher brightness than is achievable with a standard lamp.
- \* The LED Lamps are available with a choice of different colors, light intensities, epoxy colors, etc.,

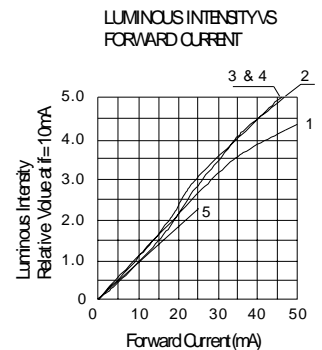
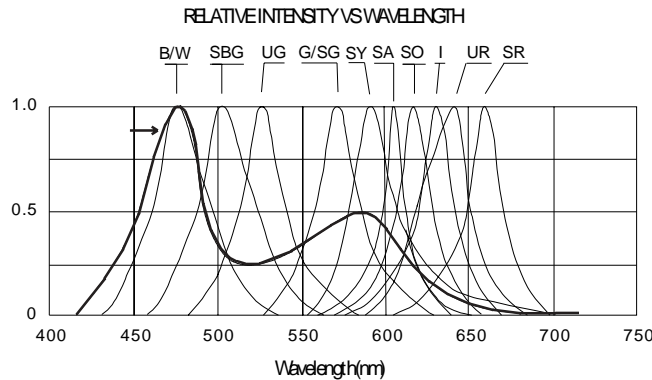
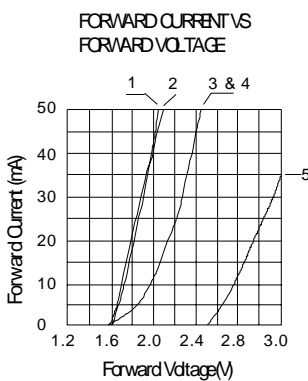


Tolerance ± 0.2 mm

Note : All Dimensions are in mm

PART NO'S.	S. No.	VIEW ANGLE	LENS DIA	LENS HEIGHT																
	1	110°	-	0	KLHF700 I	KLHF700 SR	KLHF700 G	KLHF700 SG	KLHF700 SY	KLHF700 SA	KLHF700 SO	KLHF700 UR	KLHF700 B/UB	KLHF700 BG	KLHF700 UG	KLHF700 W	KLHF700 RGB			
	2	120°	3	1.35	KLHF713 I	KLHF713 SR	KLHF713 G	KLHF713 SG	KLHF713 SY	KLHF713 SA	KLHF713 SO	KLHF713 UR	KLHF713 B/UB	KLHF713 BG	KLHF713 UG	KLHF713 W	KLHF713 RGB			
	3	90°	3	1.50	KLHF715 I	KLHF715 SR	KLHF715 G	KLHF715 SG	KLHF715 SY	KLHF715 SA	KLHF715 SO	KLHF715 UR	KLHF715 B/UB	KLHF715 BG	KLHF715 UG	KLHF715 W	KLHF715 RGB			
	4	90°	3	1.90	KLHF719 I	KLHF719 SR	KLHF719 G	KLHF719 SG	KLHF719 SY	KLHF719 SA	KLHF719 SO	KLHF719 UR	KLHF719 B/UB	KLHF719 BG	KLHF719 UG	KLHF719 W	KLHF719 RGB			
	5	90°	5	2.50	KLHF725 I	KLHF725 SR	KLHF725 G	KLHF725 SG	KLHF725 SY	KLHF725 SA	KLHF725 SO	KLHF725 UR	KLHF725 B/UB	KLHF725 BG	KLHF725 UG	KLHF725 W	KLHF725 RGB			
OPERATING CHARACTERISTICS AT 25°C (Bigger Display may have more than one LED chip per segment)					UNITS	SYMBOL	RED I	SUPER RED SR	GREEN G	SUPER GREEN SG	SUPER YELLOW SY	SUPER AMBER SA	SUPER ORANGE SO	ULTRA RED UR	BLUE B/UB	BLUE GREEN BG	ULTRA GREEN UG	WHITE W	R G B RGB	
Semiconductor Composition							AlGaAs		GaP/AlInGaP		AlInGaP			SiC / GaInN						
* Forward Voltage - Typical @ 25mA					V	V <sub>F</sub>	2.10	1.90	2.20	2.20	2.10	2.10	1.90	1.90	3.50	3.50	3.50	3.50	3.50	
* Forward Voltage - Maximum @ 100 mA					V	V <sub>FM</sub>	2.40	2.10	2.60	2.40	2.40	2.40	2.40	2.10	4.50	4.50	4.50	4.50	4.50	
Reverse Current @ V <sub>R</sub> = 5V					μA	I <sub>R</sub>	100	100	100	100	100	100	100	100	100	100	100	100	100	
Peak Emission Wavelength					nm	λ <sub>P</sub>	630	660	568	572	590	610	620	640	470	502	525	---	---	
Emission Wavelength Half Width					nm	Δλ	35	20	30	15	15	15	20	20	25	30	35	---	---	
Luminous Intensity @ 25mA (HF719XX)					mcd	v	3000	3000	4000	6000	6000	6000	9000	3000	7000	9000	10000	6000		
ABSOLUTE MAXIMUM RATINGS AT 25°C (WITH HEATSINK OF 10X10 cms)																				
Reverse Voltage					V	V <sub>R</sub>	5	5	5	5	5	5	5	5	5	5	5	5	5	
Forward Current (avg)					mA	I <sub>F</sub>	200	200	200	200	200	200	200	200	200	200	200	200	200	
Peak Forward Current (T<1μs)					mA	I <sub>FS</sub>	200	200	200	200	200	200	200	200	200	200	200	200	200	

ELECTRICAL CHARACTERISTIC CURVES



1. AlGaAs : I, SR

2. GaP : G

3 & 4. AlInGaP : SG, SY, SA, UR, SO

5. GaInN : B, BG, UG, W